

Drafting with Weaving Software

Preferences

◆ Preferences

- Configure program defaults
- Record Notes/Records
- Calculations
- Yarn Database

- ◆ Choose number of shafts, treadles, etc.
- ◆ Choose draft layout, symbols, view, magnification
- ◆ Miscellaneous settings
- ◆ Project records and calculations
- ◆ Yarn Databases with fiber, color, sett, cost, and/or vendor

Patternland Preferences

Patternland can save a weaving file and a style file for each draft. You may load a style file from any weaving to configure the draft currently open.

a. Style formats

Format → Styles...

b. Program Setup

Program → Setup

c. Records and Notes

File → Write

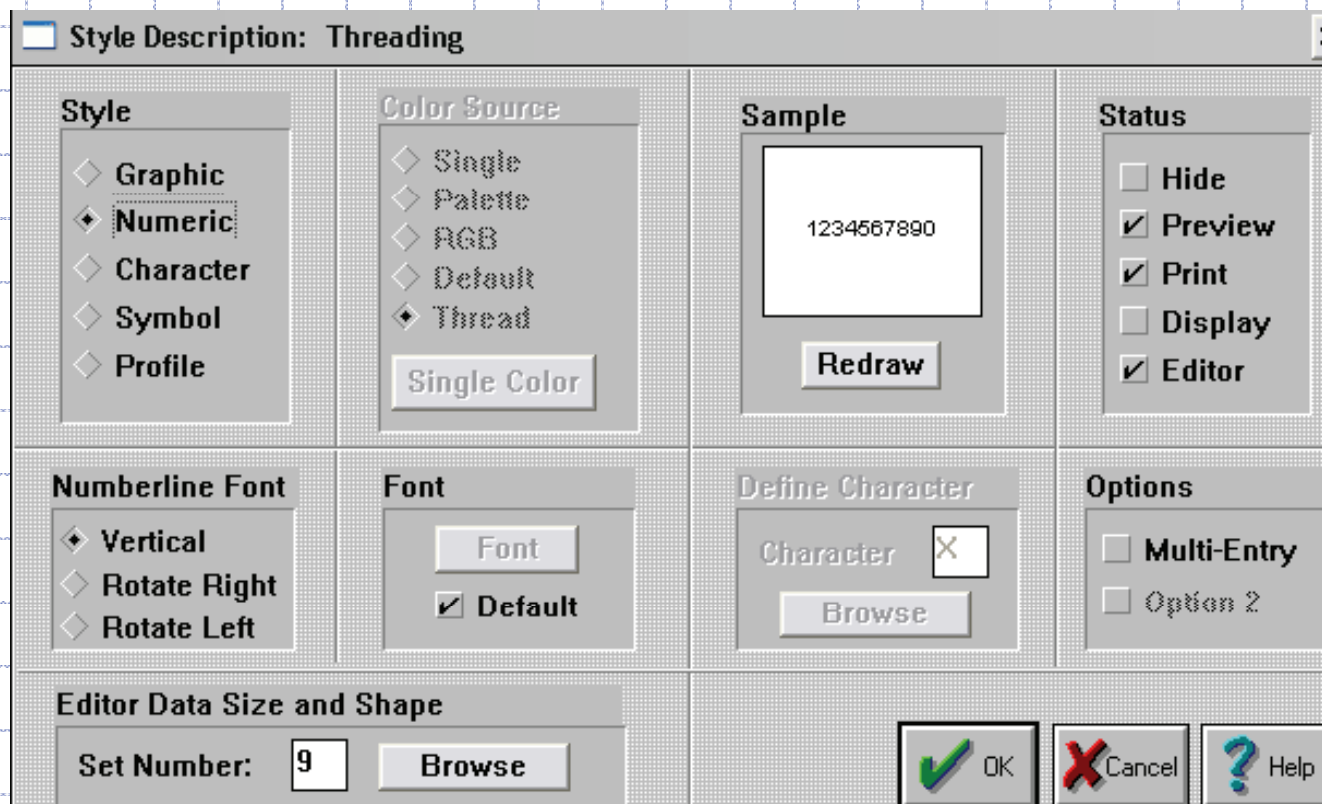
d. No Calculations

e. No Yarn Data

Patternland

a. Style formats

Each part of the draft can be configured as desired.



Format → Styles...

Patternland

b. Program Setup

Program Setup

Style Actions Preferences

- Autosave style overwrites default
- Open default style file
- Save weaving/design style file
- Open weaving/design style file

Default Style Filename:

- Save default style filename

Default Colors Filename

- Open default colors file

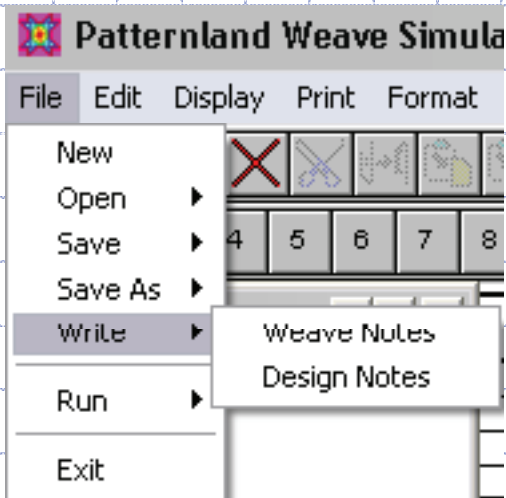
Opening Weaving Directory

Program → Setup

Patternland

c. Records and Notes

File → Save As



The image shows a dialog box titled 'Title and Artist Information'. It contains several text input fields: 'Title' (with 'Test file' and a note 'You can add short notes here.'), 'Artist/Weaver', 'Address', 'Email', 'Telephone Number', and 'FAX Number'. At the bottom, there are buttons for 'Save Artist Info', 'Get Artist Info', 'OK', 'Cancel', and 'Help'.

File → Write