

# Drafting with Weaving Software Preferences

## ◆ Preferences

- Configure program defaults
- Record Notes/Records
- Calculations
- Yarn Database

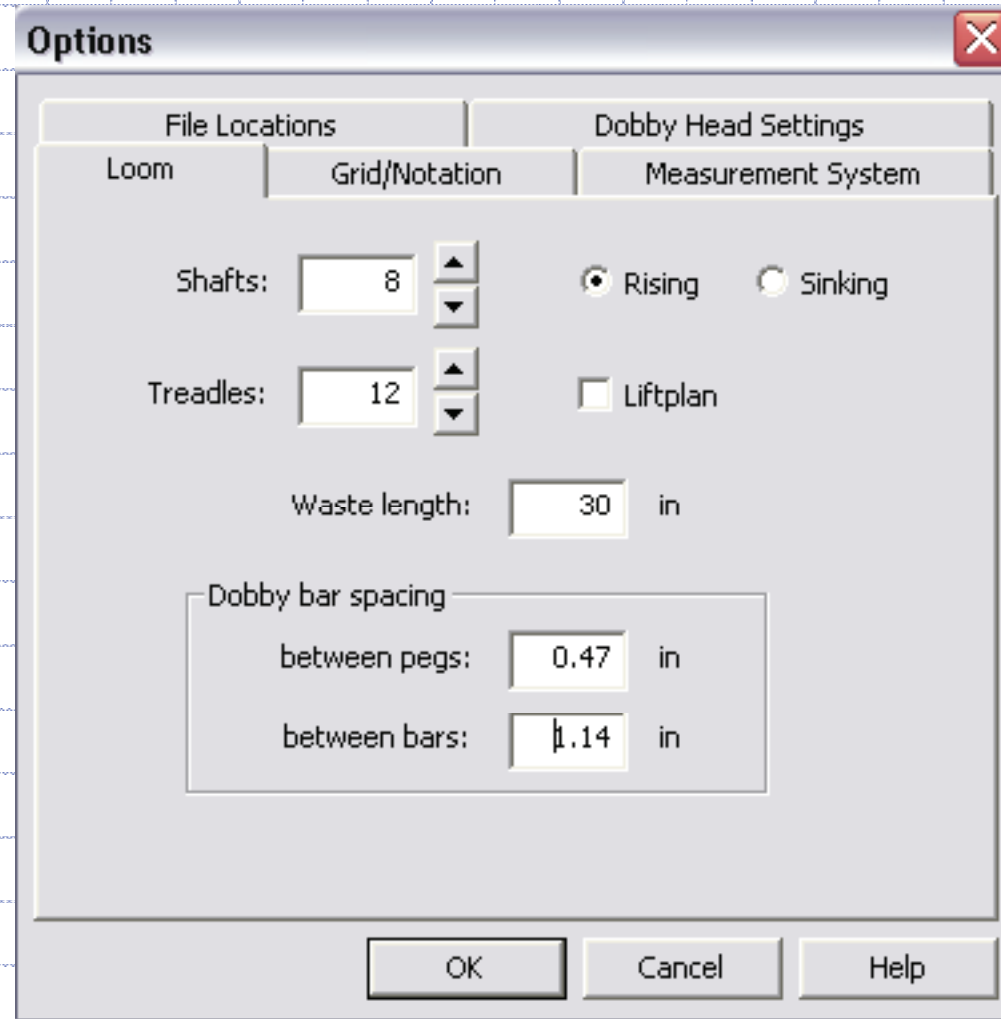
- ◆ Choose number of shafts, treadles, etc.
- ◆ Choose draft layout, symbols, view, magnification
- ◆ Miscellaneous settings
- ◆ Project records and calculations
- ◆ Yarn Databases with fiber, color, sett, cost, and/or vendor

# pixeLoom Preferences

- a. Loom Options      Tools → Options
- b. Grid/Notation      Tools → Options
- c. Notes      File → Properties
- d. Calculations      Tools → Project Planner...
- e. Yarn Database      Tools → Yarn Database...
- f. Yarn Density      Tools → Yarn Density

# pixeLoom

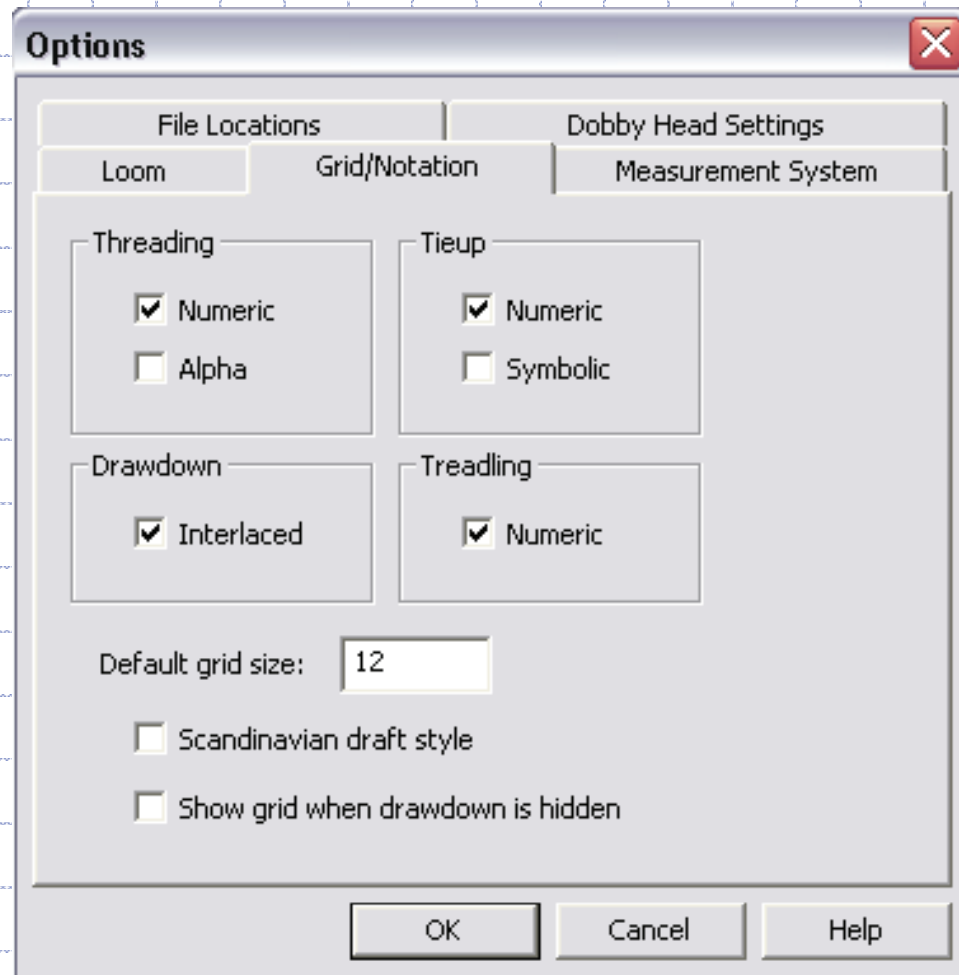
## a. Loom Options



Tools → Options

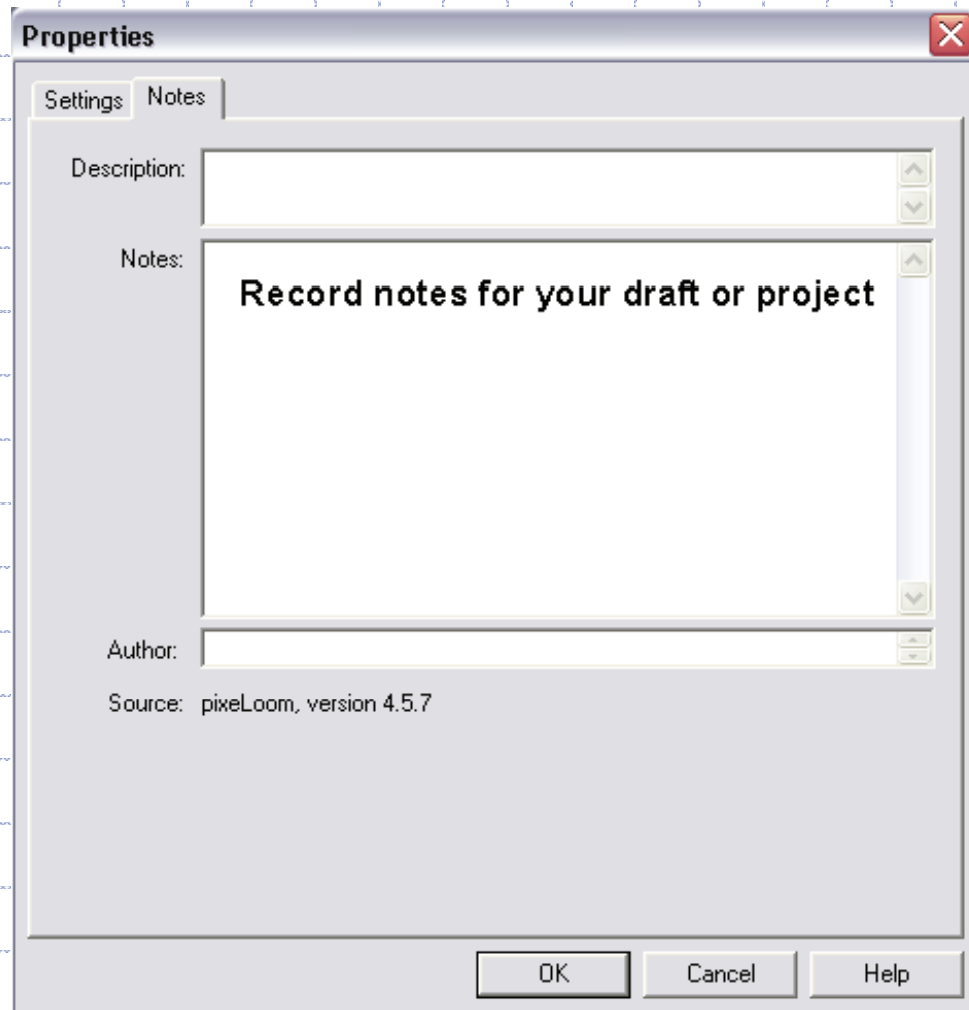
# pixeLoom

## b. Grid/Notation



Tools → Options

# pixeLoom c. Notes



# pixeLoom

## d. Calculations

A series of screens that collect information for the calculations.

The screenshot shows a software window titled "Project Plan <blocks-3-direct.wif:2>". The interface is divided into several sections for data entry and calculation. On the right side, there is a vertical diagram of a loom with a hatched pattern.

Item width: 10.0 in	Item length: 50.0 in
Items on weft: 1	Items on warp: 3
Between items: 0 in	Between items: 1 in

Total width: 10.0 in	Total length: 4.4 yd
Draw-in: 0.5 in	Take-up: 10 %
Shrinkage: 15 %	Shrinkage: 8 %
	Loom waste: 30 in
	Sample: 10 in

Width in reed: 12.0 in	Warp length: 6.1 yd
------------------------	---------------------

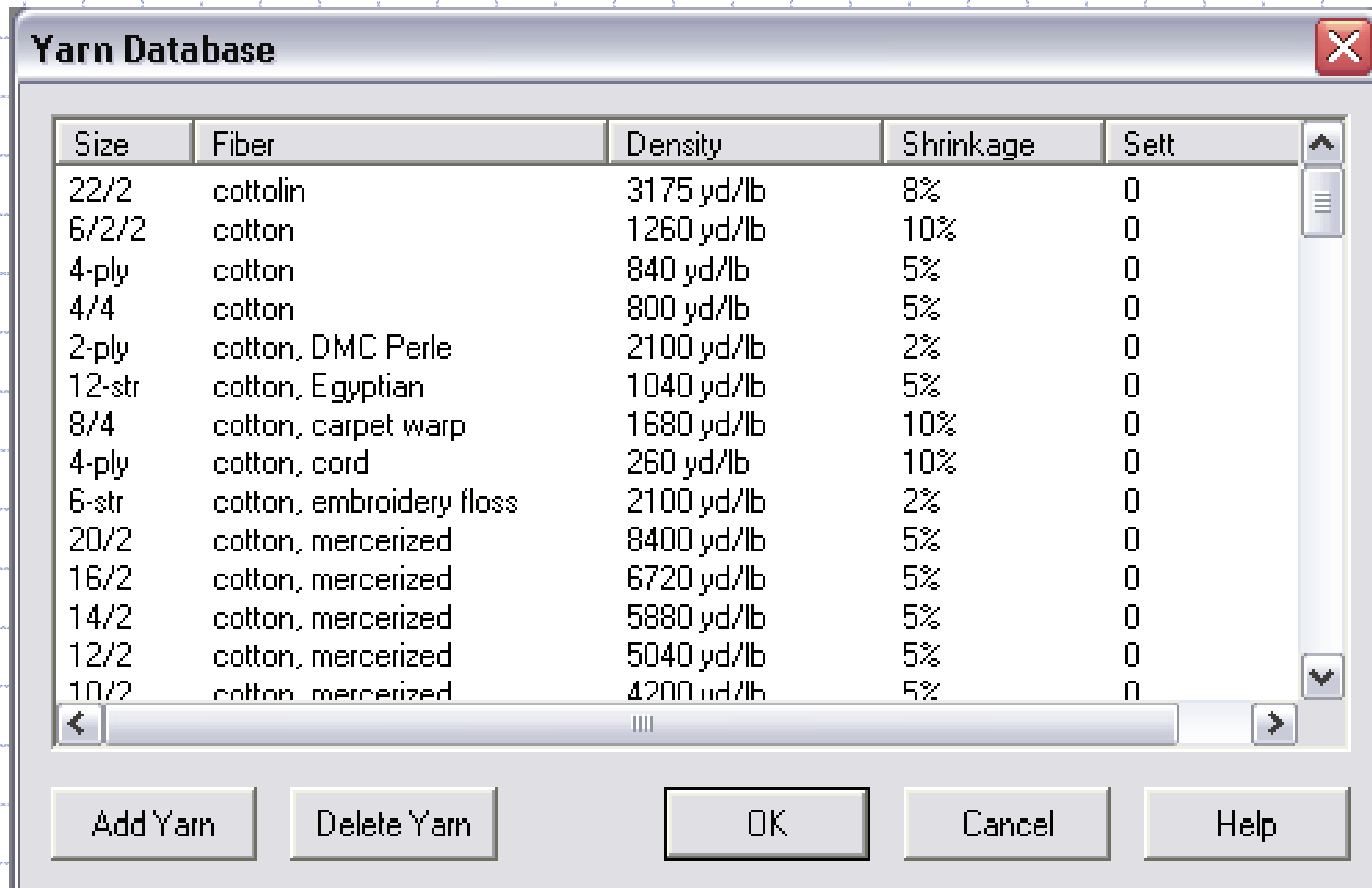
Warp yarn: 22/2 cottolin		
Sett: 20 epi	Density: 3175 yd/lb	
Number of ends: 240	Quantity: 1463 yd	Weight: 0.5 lb

Weft yarn: 16/2 linen		
Beat: 10 ppi	Density: 2400 yd/lb	
Number of picks: 1894	Quantity: 632 yd	Weight: 0.3 lb

# pixeLoom

## 2e. Yarn Database




Size	Fiber	Density	Shrinkage	Sett
22/2	cottolin	3175 yd/lb	8%	0
6/2/2	cotton	1260 yd/lb	10%	0
4-ply	cotton	840 yd/lb	5%	0
4/4	cotton	800 yd/lb	5%	0
2-ply	cotton, DMC Perle	2100 yd/lb	2%	0
12-str	cotton, Egyptian	1040 yd/lb	5%	0
8/4	cotton, carpet warp	1680 yd/lb	10%	0
4-ply	cotton, cord	260 yd/lb	10%	0
6-str	cotton, embroidery floss	2100 yd/lb	2%	0
20/2	cotton, mercerized	8400 yd/lb	5%	0
16/2	cotton, mercerized	6720 yd/lb	5%	0
14/2	cotton, mercerized	5880 yd/lb	5%	0
12/2	cotton, mercerized	5040 yd/lb	5%	0
10/2	cotton, mercerized	4200 yd/lb	5%	0

7 Tools → Yarn Database...

# pixeLoom

## f. Yarn Density

**Density Calculator** 

Quantity:

Weight:

Density: