

# Drafting with Weaving Software

## Open and Save Files

- ◆ 1. Open and Save Proprietary Files:
  - Each program may have a proprietary file type
  - These files will only open in the program to which they belong
  - Open a 'bunch' of files at the same time (two ways)
- ◆ 2. Open/Save or Import/Export WIF Files
- ◆ 3. Import/Export Graphics Files
- ◆ 4. WIF files: Weaving Information Files
  - A standard for sharing weaving files among different weaving programs and the human reader.
  - Helps
- ◆ Note: 'Save' keeps the same file name and overwrites original file;  
'Save As' allows you to change the name of a file and keep both files.

# Fiberworks Bronze/Silver

## 1. Open Proprietary Files

### File types

- .dtx version 4 files
- .des<sup>1</sup> DOS version 3 files

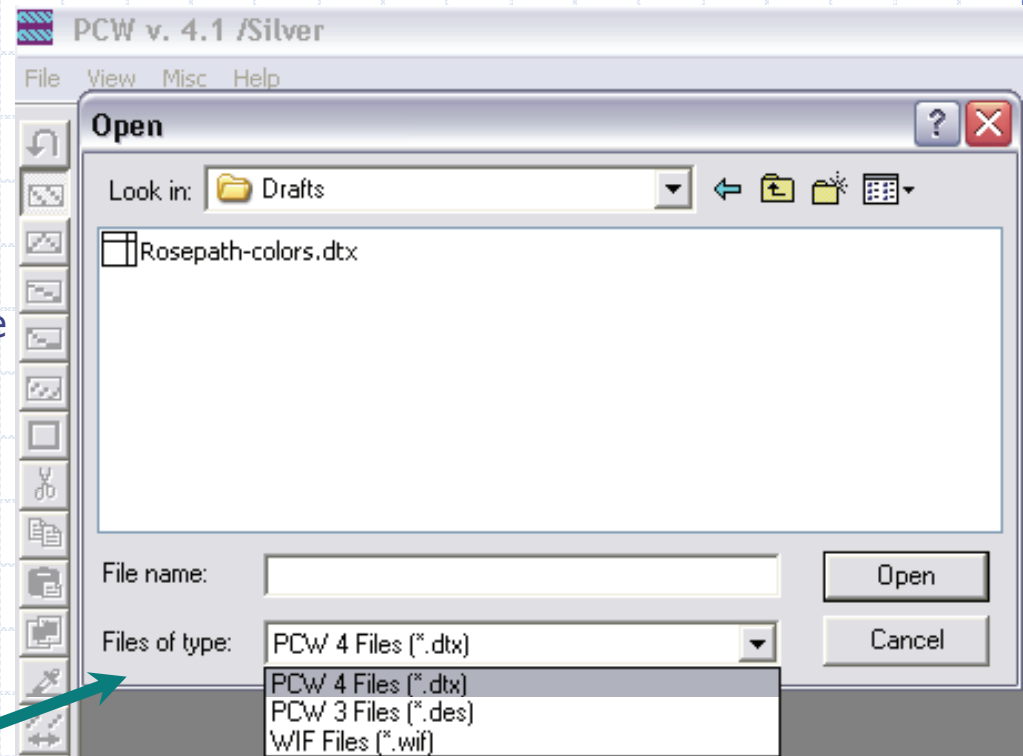
### Notes:

1. .des files are also used by ProWeave

Use:

File → Open Drawdown

Choose Files of Type



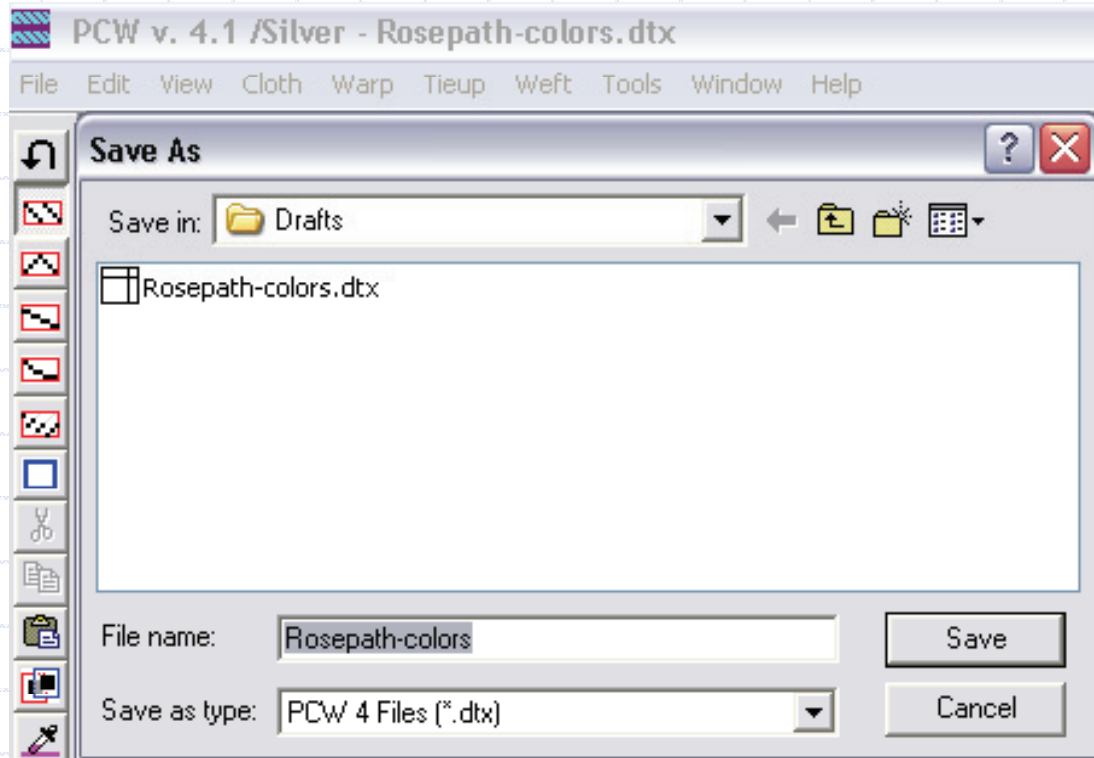
# Fiberworks Bronze/Silver

## 1b. Save Proprietary Files

Use:

File → Save

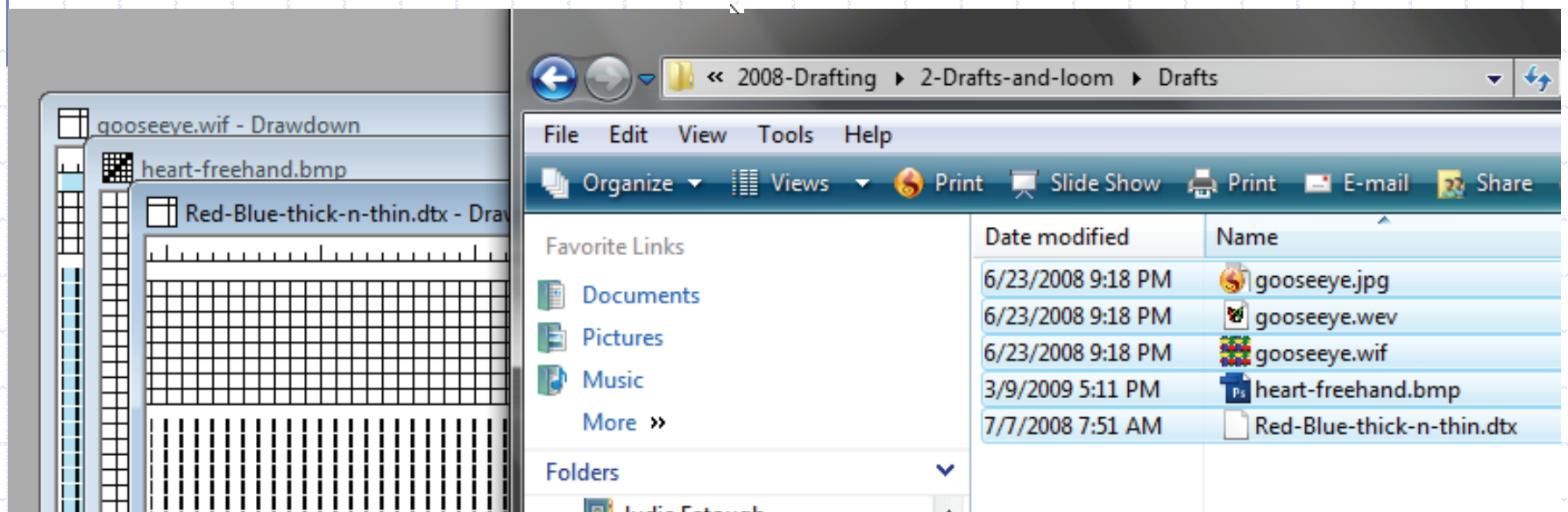
File → Save As



# Fiberworks Silver

## 1c. Open a 'bunch'

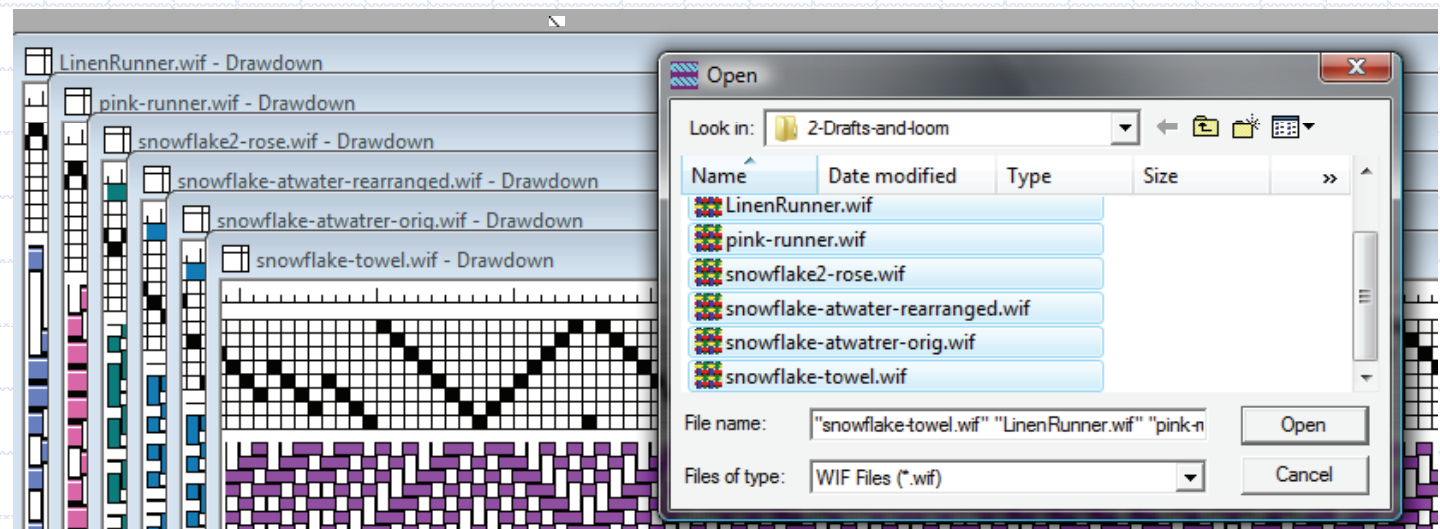
Start Fiberworks, start Windows Explorer (Start key + e). Highlight files and drag to Fiberworks. Fiberworks will open dtx, wif, and bmp files and ignore the rest. Here it opened 1 of each type and ignored the other two file types.



# Fiberworks Silver

## 1d. Open a 'bunch'

Start Fiberworks, go to File→Open Drawdown or File→Open Sketchpad and choose the type of file you want to open. Highlight files (Shift+click or Ctrl+click) and click on open. All of the selected files will open at the same time.



# Fiberworks Silver

## 3. Open/Save Graphics Files

Use:

File → Open Sketchpad (\*.bmp file)

File → Save

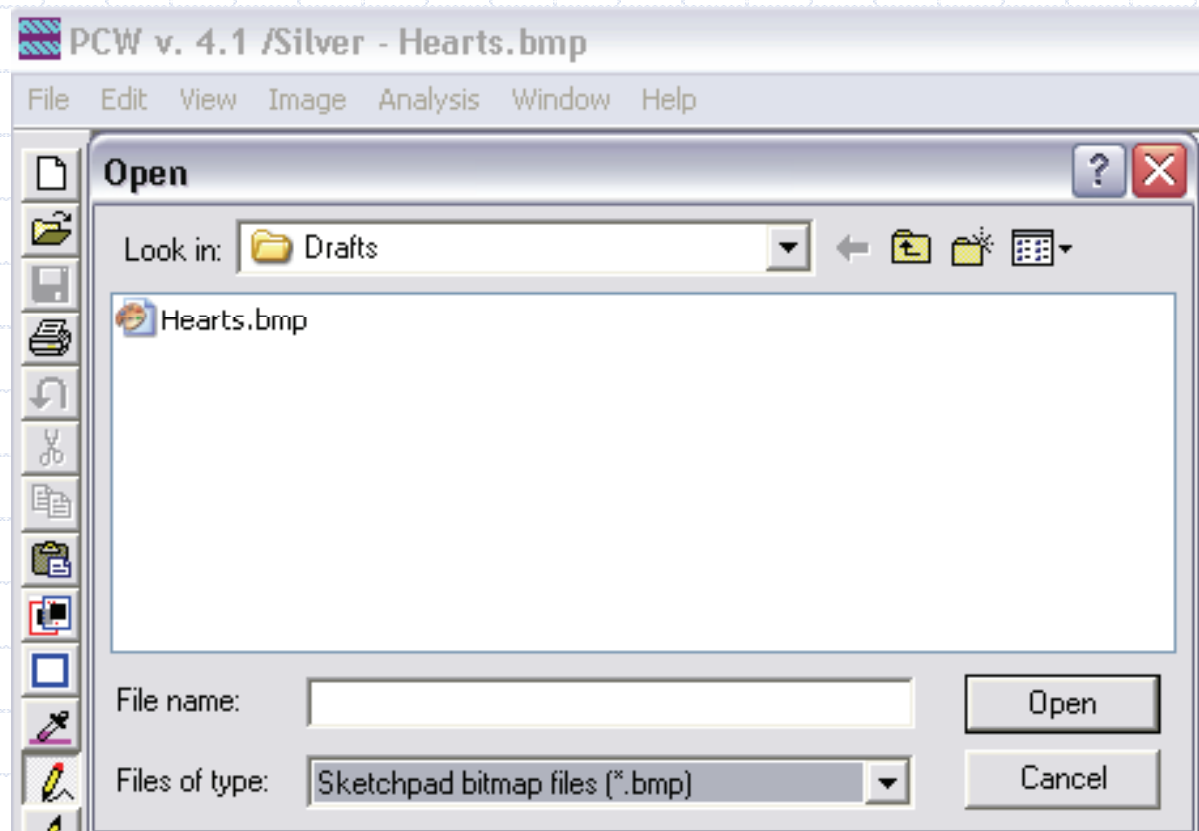
File → Save As

Clipboard feature:

Edit → Copy Image

From sketchpad or  
drawdown will copy  
the open window to  
the windows clipboard.

Shortcut: Ctrl+M



# Fiberworks Bronze/Silver

## 2. Open/Save WIF Files

Use:

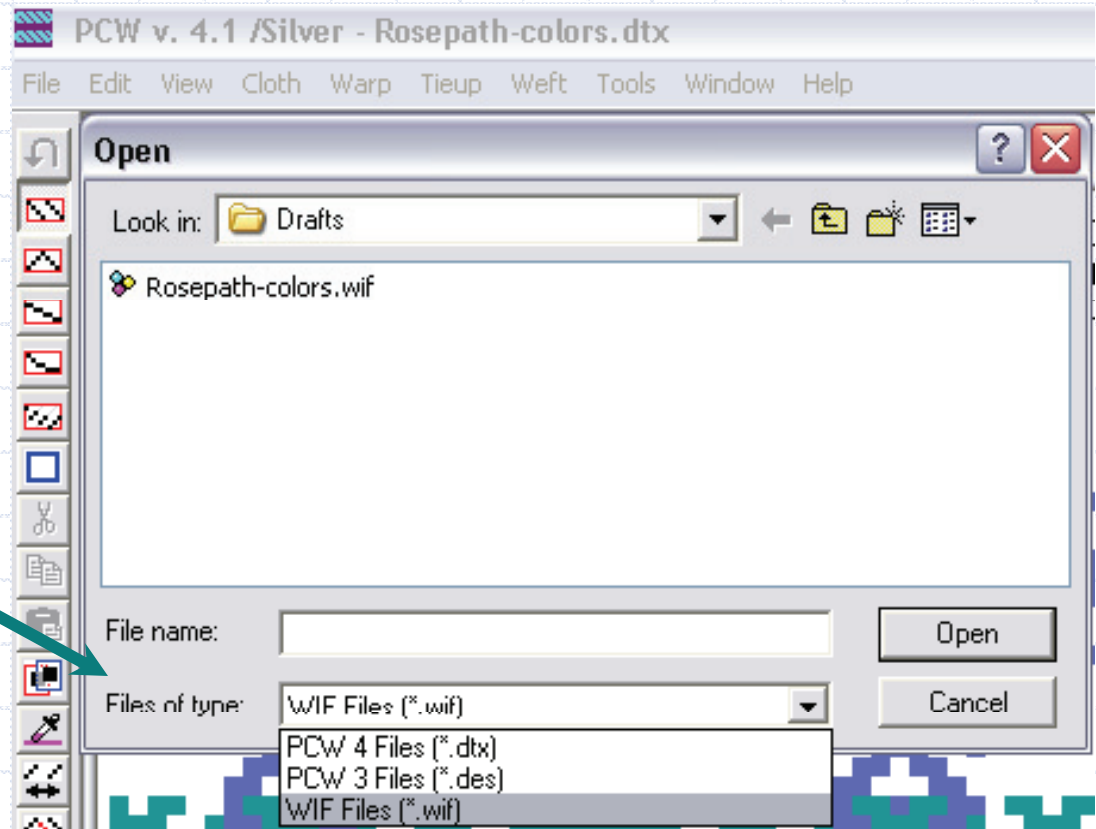
File → Open Drawdown

File → Save

File → Save As

Change Files of type

To WIF



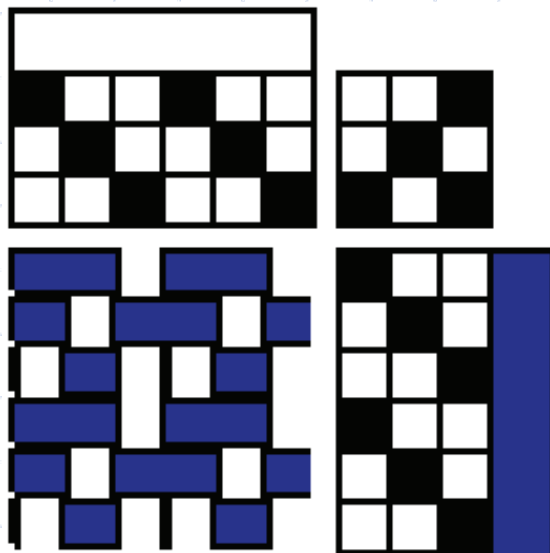
# WIF Files

- ◆ WIF files are text files
- ◆ WIF files can be read in text editors such as Notepad (Windows) and Simple Text (Mac)
- ◆ See each program for information about opening/saving/exporting WIF files.



# WIF Files

## Part of a WIF file



```
[WIF]
Version=1.1
```

```
[CONTENTS]
COLOR PALETTE=true
TEXT=true
WEAVING=true
WARP=true
WEFT=true
COLOR TABLE=true
THREADING=true
TIEUP=true
TREADLING=true
WARP COLORS=true
WEFT COLORS=true
NOTES=true
```

```
[THREADING]
1=1
2=2
3=3
4=1
5=2
6=3
```

```
[TIEUP]
1=1
2=2
3=1,3
```

```
[TREADLING]
1=1
2=2
3=3
4=1
5=2
6=3
```

```
[WEAVING]
Rising Shed=true
Treadles=3
Shafts=3
```

# WIF Files Helps

- ◆ WIF file does not open when clicked.  
Open your weaving program and open/import the WIF file from the programs menu.
- ◆ It still will not open or opens incorrectly.  
WIF files can have up to 255 shafts. If a draft has 73 shafts and your weaving software allows 32, it will not open or will open incorrectly. (Drawloom and pickup designs often have lots of shafts.)
- ◆ Check to see if the software has an update.  
Often this solves the problem.

# WIF Files—Helps

- ◆ **The colors are not the same.**  
Colors often give different results when using WIF files. Using the default warp and weft colors often gives poor results. Experiment.
- ◆ **Thickness does not appear in the draft.**  
Not all programs have a thickness feature.
- ◆ **It appears as text in an email.**  
Copy the lines of text into Notepad or Simple Text.  
Do not use HTML or word processors. Save the file.  
For Windows make sure the file has a .WIF suffix.  
(Just rename the file and change .txt to .WIF.)

# WIF Files—Helps

- ◆ The file will not open using a Mac.  
Open the file in Simple Text and re-save it.  
Email the file to yourself and save as text file.  
Use SetItsType!.sit to help identify files.
- ◆ Look at files in a text editor.  
Compare it to a WIF file that works in your software.
- ◆ Ask the software programmer for help.
- ◆ All of the programs included here write WIF files that can be opened by the other programs in Windows. I have tested many of them using OS8.6 and WeaveMaker.